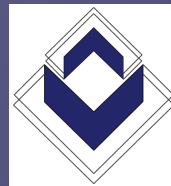


Aspec (HK) Ltd., is a Hong Kong based Company established in 1997 to provide consultancy services within Hong Kong and throughout Asia

aspec



"The Company's intention is to provide quality of service through specialisation in a limited number of consultancy fields and the exclusive use of highly trained and experienced personnel. We guarantee that each consultancy commission will be planned, carried out and reported by Aspec personnel with at least 10 years experience in the relevant field"



Asbestos consultancy services

Aspec provides the full range of asbestos consultancy services which meet the requirements of the Hong Kong Air Pollution Control Ordinance. For work elsewhere in Asia we are experienced in working to any required standards or guidelines required by the nationality of the Client. Past contracts have been designed to meet asbestos regulations issued by the UK, USA and Australia.

The asbestos consultancy team has over 90 man-years experience of working with asbestos, both on the project management side and as laboratory analysts. The team contains two HK Environmental Protection Department (EPD) registered asbestos consultants.

Asbestos containing materials are identified, survey and abatement reports produced, and asbestos removal work supervised and certified. Project management can include : tendering; vetting of contractors; appointment; liaison with Environmental Protection agencies, Labour Department agencies and other Government bodies concerned.

Asbestos projects have ranged from public housing estates; schools; colleges and universities; hospitals; hotels; airports; ships; residential / commercial properties; shopping malls; railways; highways structures; rural areas and farmland; and industrial plants.



Contaminated land investigation and remediation

Aspec provides consultancy services to meet the requirements of the HK Environmental Impact Assessment Ordinance relating to investigations and remediation of contaminated land. Under the legislation framework contamination assessment plans, contamination assessment reports and remedial action plans are required for Government approval prior to project implementation.

Projects have included investigation and supervision of remediation at : Kai Tak Airport; gas plants; hospitals; and petrol stations. The project team includes a chartered chemist.



Construction materials investigation

Aspec provides consultancy services to investigate and report on construction material defects and carry out material condition surveys in association with materials testing laboratories.

Previous projects include investigations of common material defects to residential/commercial properties such as tiling defects, concrete failure, water ingress and specialised investigations such as road tunnel inspections.

The team is experienced in expert witness and litigation concerning material defects/failure.

Aspec (HK) Ltd., 10B Hong Kong Industrial Building, 444-452 Des Voeux Road West, Hong Kong

Tel. (852) 3101 0671

Fax. 3101 0647

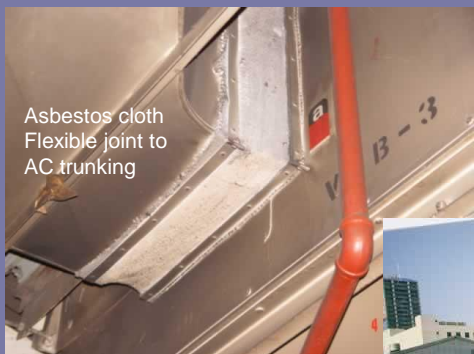
email : mail @ aspec.biz

web : www.aspec.biz

asbestos

Aspec provides the full range of asbestos management services which meet the requirements of the Hong Kong Air Pollution Control Ordinance. The asbestos team has over 100 man years experience of working with asbestos, both on the project management side and as laboratory analysts. The team contains Hong Kong Government registered asbestos consultants.

Asbestos containing materials are identified, survey and abatement reports produced, and asbestos removal work supervised. Project management includes : vetting of contractors; appointment ; liaison with Government ; site surveillance and audit; liaison with air testing laboratory, and final inspection checks.



Asbestos cloth
Flexible joint to
AC trunking



Kai Tak Airport survey

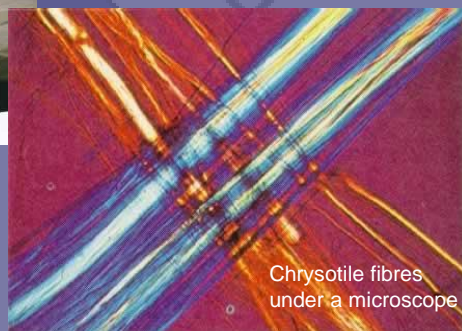
Since 1997 over 1600 asbestos contracts - involving inspection and abatement in more than 7,000 premises - have been completed



Decontamination of
Container ship

Experience

The team has undertaken asbestos management services in Hong Kong, China and elsewhere in Asia since 1997 for a wide range of clients including Government, architects, engineers and developers.



Chrysotile fibres
under a microscope

Asbestos - Frequently asked questions

For further details on asbestos survey and removal read our FAQ report on our web site

Projects completed

Examples of sites surveyed for asbestos and subsequent supervision of asbestos removal include: public housing estates; schools, colleges and universities; hospitals; residential/ commercial properties; Kai Tak Airport, shopping malls; incinerator plants; road tunnels; ships; dockyards; trains; rural land plots.

Asbestos in China

Aspec advises all foreign owned companies or ships operating in China to be aware of the use of asbestos containing products in China and take precautions to control their introduction into your premises

Aspec (HK) Ltd., 10B Hong Kong Industrial Building, 444-452 Des Voeux Road West, Hong Kong

Tel. (852) 3101 0671

Fax. 3101 0647

email : mail @ aspec.biz

web : www.aspec.biz

contaminated land

Aspec provides consultancy services to meet the requirements of the Environmental Impact Assessment Ordinance relating to investigations and remediation of contaminated land. Under the legislation framework contamination assessment plans, contamination assessment reports and remedial action plans are required for approval by Government prior to project implementation.



Excavation of oil contaminated fill



Soil waste for treatment

Investigation of contaminated land has its own dangers, and Aspec carry out risk assessments prior to investigations and produce detailed method statements of all procedures to ensure environmental and personal safety.

Experience

The team specialises in the handling of toxic materials such as cyanide and heavy metals which require comprehensive risk assessment and implementation of extensive personal protective measures



Coring cyanide contaminated soil

Toxic materials

Contaminated land sites have been investigated for heavy metal contamination, cyanide, oil and other organic contaminants. Remedial action plans have included chemical stabilisation of heavy metal contaminated concrete and soil, soil stabilisation and excavation / disposal of contaminated materials.

Projects completed

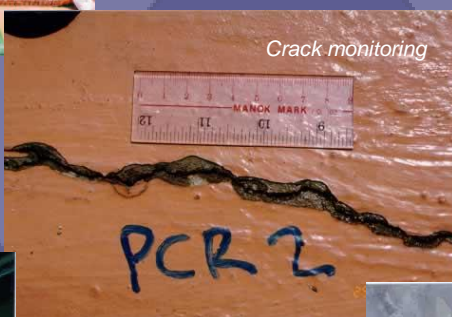
Projects have included investigation and supervision of remediation at: Kai Tak Airport; gas plants; hospitals; and petrol stations. The Aspec team includes a chartered chemist.

Aspec (HK) Ltd., 10B Hong Kong Industrial Building, 444-452 Des Voeux Road West, Hong Kong

Tel. (852) 3101 0671 Fax. 3101 0647 email : mail @ aspec.biz web : www.aspec.biz

construction materials investigations

Aspec provide consultancy services to investigate and report on construction material defects and carry out material condition surveys in association with materials testing laboratories.



Experience

Investigations carried out ranges from general building condition surveys to specialist examination of building products – usually following failure or non-performance.

The materials inspection team have many years experience of both working in materials testing laboratories and carrying out quality audits of testing activities.

Litigation and arbitration

The team is experienced in expert witness and litigation concerning material defects/failure.

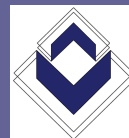
Projects completed

Previous projects include investigations of common material defects to residential/commercial properties such as tiling defects, concrete failure, water ingress and specialised investigations such as road tunnel inspections.

Aspec (HK) Ltd., 10B Hong Kong Industrial Building, 444-452 Des Voeux Road West, Hong Kong

Tel. (852) 3101 0671 Fax. 3101 0647 email : mail @ aspec.biz web : www.aspec.biz

projects completed



Since 1997 Aspec have completed over 1400 contracts in our chosen specialised fields. Examples of completed projects include the following:



Survey of Kai Tak Airport

Production of asbestos survey report, asbestos abatement plan, and supervision of asbestos removal

Survey of large luxury hotel, Thailand

Survey of a leading hotel in Bangkok, Thailand



Express Rail Link

Production of asbestos survey report, asbestos abatement plan and supervision of asbestos removal from line of Hong Kong to Guangzhou express rail link



Hong Kong Education Bureau

Survey for, and management of asbestos in over 150 schools, followed by supervision of removal of all asbestos materials



Aberdeen Tunnel

Preparation of asbestos abatement plan and supervision of removal of asbestos lining to road tunnel



Survey and supervision of removal of asbestos from telephone exchanges throughout Hong Kong

Container ship in dock yard, Shenzhen, PRC

Supervision of removal of asbestos lining to propeller shaft bearing in dry dock



Aspec (HK) Ltd., 10B Hong Kong Industrial Building, 444-452 Des Voeux Road West, Hong Kong

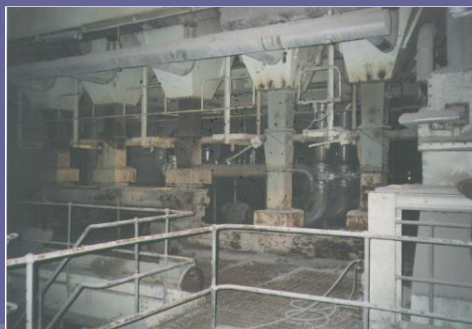
Tel. (852) 3101 0671

Fax. 3101 0647

email : mail @ aspec.biz

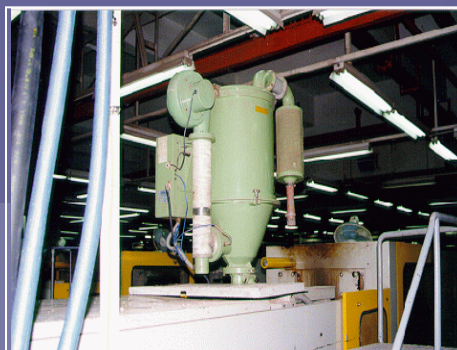
web : www.aspec.biz

projects completed



Kwai Chung Incinerator

Asbestos survey report, asbestos abatement plan and supervision of asbestos removal from refuse incinerator plant



International toy factory, Shenzhen, PRC

Asbestos survey, asbestos management plan and asbestos awareness training of employees

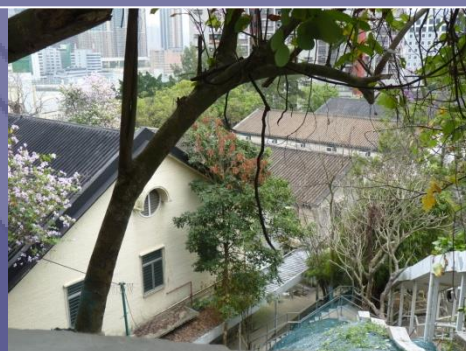


Lower Ngau Tau Kok Estate

Asbestos survey and asbestos abatement plan prior to demolition of large public housing estate

Lai Chi Kok Hospital

Asbestos survey of an historic hospital site as part of a heritage revitalization scheme



Soft drinks manufacturer PRC

Asbestos survey of soft drink bottling plants in Hangzhou, Xiamen and Guangzhou

Village fire site

Preparation of asbestos abatement plan and supervision of removal during demolition of village housing following a fire



Survey of 73no. bank branches throughout Hong Kong

Production of asbestos survey report, asbestos abatement plan and asbestos management plan

Aspec (HK) Ltd., 10B Hong Kong Industrial Building, 444-452 Des Voeux Road West, Hong Kong

Tel. (852) 3101 0671

Fax. 3101 0647

email : mail @ aspec.biz

web : www.aspec.biz

projects completed



Kai Tak Airport

Inspection of metal plating work shop & identification of heavy metal contaminated concrete floor slab.

Remediation measures included chemical stabilisation of concrete prior to disposal



Kai Tak Airport

Drilling and sampling of soil suspected to be contaminated with cyanide salts.

Stabilisation of soil prior to disposal



Aberdeen Tunnel

Investigation of materials failure in tunnel wall lining.



Fuel oil tanks, Ap Lei Chau, Aberdeen

Contaminated land investigation for marine fuel oil depot prior to demolition. Production of assessment report and remedial action plan. Supervision of excavation of soil

Private residential development, Tuen Mun

Podium leak investigation using fluorescent dyes in water pond. Also involved general building condition survey.



Hospital fuel oil depot

Contaminated land investigation, production of assessment report and remedial action plan. Supervision of removal of oil tank



Private residential development

Building defect survey after renovation works to residential tower block. Investigation of water ingress to flat units

